

2018-2019

Kinross Chair in Environmental Governance

UNIVERSITY
of GUELPH

IMPROVE LIFE.

Prepared by:

Mary Granskou

Kinross Chair in Environmental Governance
University of Guelph

June 2019



Thank you from the Kinross Chair in Environmental Governance

Congratulations to Kinross Gold on 25 years of corporate responsibility and community partnership in global mining.

You've reached an impressive milestone that is elevated by your commitment to transparency, community engagement and environmental accountability. I applaud your attention to ethical business practices that minimize your footprint and leave healthier communities in your wake.

I also believe that your efforts to improve life beyond your corporate contributions are examples of leadership that will bring greater awareness of conservation and sustainability to a broader social and economic consciousness.

Indeed, your support of the Kinross Chair in Environmental Governance brings discussion, policies, campaigns, strategies and actionable research to the challenges of direct accountability for businesses, communities and citizens, in tandem with the opportunity for deeper learning at the University of Guelph.

As the 3rd Kinross Chair in Environmental Governance, it is my privilege to present this report on the discussions we have had and the partnerships we are forging, as a result of Kinross generosity. On behalf of myself, and the staff, students and faculty at the University of Guelph, I thank you for your insightful contributions.

With warmest regards,

Mary Granskou


Kinross Chair in Environmental Governance
University of Guelph

» OVERVIEW

As Kinross Chair in Environmental Governance, I am tasked with bringing discussion, accountability and outreach initiatives to the ever-advancing need to protect our natural world.

The list of critical environmental threats that humanity is facing, continues to grow. Climate change, deforestation, loss of biodiversity, pollution, and oceanic dead zones can be linked to many of the recent natural disasters that the earth has endured.

The strengths that I bring to this role are founded in my recognition and implementation of the power of partnerships. With the experience of almost 3 decades as an advisor and expert in the field of sustainable environments, I have had a front row seat to the successful processes of building strategic partnerships that produce actionable results.



Climate change, deforestation, loss of biodiversity, pollution, and oceanic dead zones can be linked to many of the recent natural disasters that the earth has endured.

When it comes to protecting our environment, it is a misconception to believe that governments are equipped to lead the charge for better protocols. In fact, most often governments cannot – and should not – act alone if an effective model for environmental protection is to be accomplished.

I propose that the path to real change lies in a much broader coalition of organizations, experts, businesses and communities who, together with governments, can bring collective strength and know-how to the issues. Not only is this approach necessary to invoke a need for accountability across all sectors for the protection of our natural

world, but with the combined voices and knowledge of these stakeholders, we can build strong cases to make things happen.

I am honoured to bring my experience in environmental challenges and sustainability to the Kinross Chair. As a policy advisor in the PM's office to executive director of a national environmental group, I have a long history of working with governments, Indigenous leaders, NGOs, industry and scientists. I have also consulted on key environmental projects such as the International Boreal Conservation Campaign and the Indigenous Guardians program, that received federal funding in 2017.

My greatest takeaway from my decades in the field of sustainable environments is that knowledge must be shared, and different viewpoints must be examined. In the context of this perspective, I have organized a variety of symposiums that bring multiple partners and potential partners together.

In my original proposal for activities, which I submitted as part of the Kinross Chair application process, I proposed organizing three major events during my semester in residence.

But the University of Guelph is keenly engaged with environmental issues – responding to the enthusiasm and appetite for deep learning in this sector, I have organized and hosted 14 events – 12 during Fall 2018 and 2 in Winter 2019. I am delighted by the response at the University of Guelph as well as the different levels of industry and government that supported this level of activity.

As you read this report, I hope that you can envision the extraordinary impact that your contributions have on all of us - the faculty and students at the University of Guelph, as well as the broader community.

» LEARNING EVENTS

I began this journey by consulting with students and faculty to scope out areas of interest. I also reached out to the Aboriginal Student Association. As you will note, most of my events were built around or reflected upon, the theme of my appointment – the Power of Partnerships.

From multiple disciplinary backgrounds, we discussed how partnerships are helping drive transformative solutions, looking at focal topics such as climate action, Indigenous empowerment and land use conflict.

Over 25 experts and University community voices from a variety of sectors across the sustainability and environmental field spoke at these events.

I was also privileged to give 9 guest lectures to classes in GEOG, POLS, BUS and SOAN where I had opportunity to share my insights and gain more perspectives.

Given this unimagined level of interest and activity, it took until March 2019 to complete my commitment to this worthy appointment.

Right: Sept. 26, 2018: our first symposium examined the power of partnerships in the context of how governments make environmental decisions.

Bottom row: a robust panel discussion, including, President Vaccarino, speaking to community sustainability - presented in consultation with Kinross Gold.





September 26, 2018: Inspiring Eco-Solutions: The Power of Partnerships - 90 Attendees

Speakers: Aaron Freeman, *Principal, Pivot Strategic (former Ontario Premier's Office Advisor)*, Katie Wall, *Program Manager, Sustainable Waterloo Region*

A key insider's perspective on how governments make environmental decisions and the power of partnerships, with an inspiring experience of climate partnerships in action from Waterloo Region.



October 11, 2018: Indigenous Stories: Land Gives Life - 10 Attendees

Speaker: Shauna Morgan Siegers, *Indigenous Conservationist/Ethnobiologist and Operations Manager, Indigenous Leadership Initiative*

An intimate and lively awareness-building discussion where Siegers shared her personal experiences supporting Indigenous communities in Canada to protect their traditional territories and cultures, with focus on Indigenous Guardians programs.



October 23, 2018: Forest Certification: History and Experience - 60 Attendees

Speaker: Chris McDonnell, *Manager Aboriginal and Environmental Relations, Rayonier Advanced Materials*

McDonnell shared his long history of supporting forestry eco-certification in Canada, and what sets the Forest Stewardship Council approach apart from other certification systems. Invited as part of Jennifer Silver's Geography 2230 class: Commodity Chains and Cultures of Consumption.



October 25, 2018: Land-Use Solutions: Geomatics for Decision-Making - 25 Attendees

Speaker: Matt Carlson, *Ecologist, ALCES Group*

Carlson shared experiences in applying geospatial information for provincial and Indigenous government decision-making, giving examples in Alberta and with First Nations.

October 29, 2018: Becoming a Consultant: The 'How-TOs' 30 Attendees

Panelists: Mary Granskou, Ze'ev Gedalof, and students, Mary-Kate Craig, Jessica Lukawiecki and Justine Townsend

Overview of the practical aspects of becoming a consultant and the pros/cons of working in that type of role.



November 7, 2018: Putting First Peoples First: A New Conservation Ethic - 20 Attendees

Speaker: Mary Granskou, Kinross Chair

I explored my personal journey – and key learnings – over 3 decades of working with Indigenous communities on land conservation.



November 7, 2018: Land Use Conflict: What Does Consent Really Mean? - 90 Attendees

Speaker: George Greene, former Kinross Chair, Founder of Stratos Consulting

Explored the concept and key learnings of Indigenous consent in today's world, particularly in relation to the failures of successive federal governments. Guest in Faisal Moola's GEOG 3210 class: Management of the Biophysical Environment.



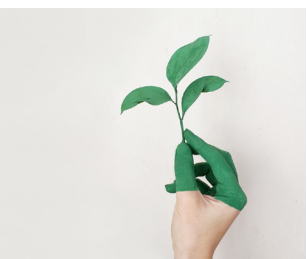
November 15, 2018: Strategic Evaluation Trends 30 Attendees

Co-hosted with CESI and The Hub for Teaching and Learning Excellence

Panelists: Andrew Taylor (Guelph Evaluation Coach), Lee-Ann Sutherland (visiting scholar), Brendan Ferguson (Social Ventures Australia) and Mary Granskou

We discussed innovations in the evaluation field and how this discipline is driving program investment, particularly in the European and North American funding communities.

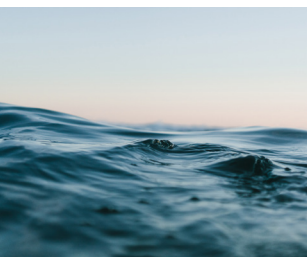




November 21, 2018: Sustainability Solutions: Climate Action

Speaker: Stephanie Cairns, Director of Cities and Communities, Smart Prosperity

Explored strategic questions relating to today's confusing array of federal and provincial climate policies and market solutions being advanced in Canada.



November 22, 2018: Sea Sick Play by Alanna Mitchell, Science Writer - 90 Attendees

Adapted from Alanna's award-winning book about how climate change is affecting the world's oceans. It explores the depths of the science, follows her personal journey and ends with hope.



November 23, 2018: Circular Economy: Food Innovation in Action - 40 Attendees

Panelists: Alan Young, Circular Economy Leadership Coalition, Barbara Swartzentruber, Guelph Circular Food Economy Initiative, Natalie Vasilivetsky, Composting Coordinator, University of Guelph

We discussed Guelph's bid to create Canada's first circular food economy, including U of G's work and the new national Circular Food Economy Coalition.



November 28, 2018: Development Case Studies: Chad and Madagascar - 15 Attendees

Speaker: Jacques Gerin, former federal Deputy Minister and Engineer

Gerin shared reflections from over 20 years in senior World Bank and Panel Advisory roles in Africa with Dr. Adam Sneyd's 6200 class: International Development.



January 30th, 2019: Environmental Policy in the Face of Political Change - 400 Attendees

Speakers: Alex Himelfarb, former Clerk of the Privy Council, Jordon Himelfarb, Politics Editor, Toronto Star

We hosted a robust panel discussion on how environmental programs and decision-making are deeply affected by changes in government, with a particular focus on climate policy. This included a dinner with U of G representatives, co-sponsored by GEOG and PolSci.

» WINTER 2019 LEARNING EVENTS:

February 24-26: Ottawa Field Trip: Meet National Sustainability Leaders

A highlight of my tenure as Kinross Chair was hosting a two-day field trip to Ottawa to meet national environment and sustainability leaders.

In collaboration with Dr. Kirby Calvert, we co-led 11 select Geography undergrad and grad students with the intent to expose them to people in a range of leadership roles who brought different styles to their work, with the ultimate goal of helping them to envision their own potential paths.

We designed the meetings to be as informal as

possible and the students responded with great questions. Leaders ranged from larger-than-life Green Party Leader, Elizabeth May to soft-spoken CEO of Canada's Wind Energy Association, Robert Hornung, from Assembly of First Nations Climate Advisor Graeme Reed to MPs across all party lines.

Feedback from students was that the trip was eye-opening and inspiring, and some characterized it as 'life-changing'. We were very pleased with the take-aways from these bright young leaders of tomorrow.



February 24-26: An inspirational trip to Ottawa where students were able to speak with people of varying leadership roles across all government party lines.

March 13, 2019: Community Sustainability: Supporting Lasting Solutions

300 Attendees

Panelists: Alan Young, Moderator, Wendy Tyrell, Development Partner Institute, Paul-Emile McNab, Canadian Council for Aboriginal Business, Elizabeth Kurucz, Professor, University of Guelph Business and Economics

We explored how mining companies can build and track the success of meaningful long-term positive environmental/social/economic legacies with the communities they serve. This event was hosted in consultation with Kinross Gold, whose representatives also participated in an exploratory research dialogue and a special dinner with the University of Guelph on the same topic that day.



Top Photo: University of Guelph President, Dr. Franco Vaccarino welcomes Kinross and thanks them for their investment in students and the environment.

Bottom Photo: January 30, 2019: Environmental Policy in the Face of Political Change (from left, Alex Himelfarb, Jordon Himelfarb, Mary Granskou.)

» GUEST LECTURES

Through my outreach with professors across campus, I was privileged to be invited as a guest lecturer in the following nine classes in geography, political science, business and sociology disciplines.

September 17, 2018: Power of Indigenous Partnerships and New Governance Models

Class: GEOG 3210: Mgmt of the Biophysical Environment, Instructor, Dr. Faisal Moola

September 27, 2018: TransMountain: Pipeline Policy Dilemma

Class: POLS 3250: Public Policy, Challenges and Prospects, Instructor Dr. Leah Levac

November 5, 2018: Lessons Learned: Evolution of Environmental Governance

Class: GEOG 4210: Environmental Governance Instructor Dr. Kirby Calvert

November 5-11, 2018: Guest Practitioner for Online Discussion

Class: BUS 6300: Business Practices for Sustainability, Instructor Dr. Elizabeth Kurucz

November 13, 2018: Indigenous Peoples: My Experiences

Class: GEOG 302: Global Environmental Change, Instructor Dr. Lucy Sportza

November 14, 2018: UN Sustainable Development Goal 15: Life on Land

Class: BUS 2200: Towards Sustainability, Instructor Dr. Mark Juhasz

November 27, 2018: Lessons Learned: Indigenous and Crown Governments

Class: POLS 3370: Environmental Politics and Governance, Instructor Dr. Ajay Sharma

January 30, 2019: My Experiences Working with Governments in Canada

Class: POLS 4900/6950: Environmental Governance and Law, Instructor Dr. Ajay Sharma

March 18, 2019: Lessons Learned: Indigenous and Crown Governments

Class: SOAN 4210: Indigenous and Settler Relations in Canadian Society, Instructor Dr. Jeji Varghese

» MENTORING STUDENTS

As the Kinross Chair in Environmental Governance, I held one-on-one mentoring meetings with 25 undergraduate Environmental Governance and graduate Geography students.

From this group, I arranged 10 phone calls or meetings with experts in the sustainability field for select students to explore questions related to employment in their areas of interest.

I also investigated potential internships for four of these students – and conversations continued after my term in residence after my term in residence was complete.

This work was particularly gratifying for me as I could offer these enthusiastic students a window into the professional field of sustainability. I was also able to bring opportunity for them to have conversations with non-academic experts, including:

- » Alan Young, *National Circular Economy Coalition*
- » Stephanie Cairns, *Smart Prosperity Institute, Victoria*
- » Alison Woodley, *Canadian Parks and Wilderness Society, Ottawa*
- » Melissa Slatkoff, *Service Canada, Toronto*
- » Matt Carlson, *ALCES Landscape and Landuse, Ottawa*
- » Caroline Underwood, *CBC Nature of Things Producer, Toronto*
- » Shaunna Morgan Siegers, *Indigenous Leadership Initiative, Winnipeg*
- » Brendon Ferguson, *Social Ventures, Australia*
- » Aaron Freeman, *Pivot Strategic Consulting, Toronto*
- » Patrick Nadeau, *Ottawa Riverkeepers, Ottawa*

» SUPPORTING PARTNERSHIPS, RESEARCH AND CURRICULUM DEVELOPMENT

Partnerships:

Sustainable Waterloo Region (SWR) supported a series of meetings, hosted with Dr. Kirby Calvert to explore a proposed partnership with the University of Guelph. SWR is a leader in working with partners to set and track internal climate action targets and is considering the feasibility of expanding into the Guelph area. The University is interested in principle and discussions are ongoing.

GreenPAC Internship introduced founder to Won-hong Yang and Kirby Calvert to consider partnering in this program where students are placed for 8 months in the offices of environmentally supportive MPs.

Research:

Kinross Exploratory Research Dialogue started with a discussion around some of their community sustainability challenges and a shared interest in community sustainability emerged at an initial meeting with Kinross Gold in September 2018. This led to an event on that topic and an exploratory research dialogue in March 2019. I facilitated this dialogue and am pleased to report that Kinross and two U of G professors are now discussing how to frame a research partnership.

Carbon Conservation and Indigenous Communities

I advised two PhD students (Mary-Kate Craig and Justine Townsend) on a project with Dr. Ben Bradshaw (Associate VP, Academic) to convene a May 2019 national gathering of interested Indigenous

communities on land-based carbon conservation. In my capacity as Kinross Chair, I connected them with contacts in Manitoba and Poplar River First Nation who are doing on-going research in this field. I also spoke regularly with Robin Roth about her Indigenous traditional knowledge/protected areas research initiative.

Curriculum Development:

I was asked to provide input on the emergent *Conservation Leadership Master's Program* and *Indigenous Resource Management Certificate*.

While I am indebted to so many, a special thanks goes to Belinda Leach (CSAHS Assoc Dean, Research) for her steady and thoughtful advice, to Wanhong Yang (GEOG Chair) for proactively helping me network and my GEOG colleagues Kirby Calvert, Robin Roth, Noella Gray and Faisal Moola for not hiding when I knocked on their office doors with crazy ideas!

I also thank CSAHS Dean, Gwen Chapman for always saying 'yes' to introducing my events and Ben Bradshaw (Asst VP, Grad Studies) for those 'aha' moments that helped me navigate.

A heartfelt thanks to all the spirited students, whose infectious 'leaning into life' energy gives me great hope!



Did You Know?

That in keeping with Guelph's interdisciplinary approach, our campus houses the **Gosling Research Institute for Plant Preservation (GRIPP)** – a state-of-the-art facility that, among other things, works to identify and develop plants that can survive and grow in old mine sites – they can propagate the right plants (extremely useful if they are endangered and/or economically relevant) and 'jump-start' their growth in open pit mines – several of these plants can absorb heavy metals/toxins left in soils by mining activities!

Hats off to everyone at CSAHS and the Department of Geography, Environment and Geomatics for hosting me, providing a lovely office, inviting me to social events and helping me feel at home.



» GENERAL OUTREACH

While in residence as Kinross Chair, I engaged broadly with environment and sustainability experts across the University of Guelph. This included meetings with over 60 professors, department Chairs, senior executives, staff, and others.

Wanhong Yang, Belinda Leach, Kirby Calvert and Noella Gray helped me focus. Robin Roth, Troy Riddell, Faisal Moola, and Elizabeth Kurucz were also helpful.

Wonderful ideas emerged on ways to collaborate

such as through events and guest lectures. I put into motion as many of these good ideas as possible, with practical application within my tenure on campus. Some of the conversations were strategic in nature and informed how I approached my work, while others created opportunities for me to contribute to U of G initiatives in my areas of expertise (eg.: how to advance U of G's commitment to sustainability).

» UNIVERSITY OUTREACH (ACADEMICS, SENIOR ADMINISTRATION AND STAFF)

College of Social and Applied Human Sciences (CSAHS):

It is notable that the large variety of expert panels and sharing opportunities that were made possible by Kinross have brought deeper learning to students engaged in the College of Social and Applied Human Sciences (CSAHS).

Gwen Chapman (Dean), **Belinda Leach/Francesco Leri** (Assoc. Dean, Research) and **Byron Sheldrick** (Assoc. Dean, Academic).

Staff: **Kourtney Beckman**, **Meredith Warner**, **Chris Donaldson**, **Debbie Bowie**, **Maria D'Ulisse**, plus on-going communications support from **Suzanne Cooper** and **Daniel Jordan**.

Geography, Environment and Geomatics

(entire department, notables below):

Wanhong Yang (Chair), **Kirby Calvert** (Undergrad Coordinator), **Noella Gray** (Grad Coordinator).

Professors: **Robin Roth**, **Faisal Moola**, **Evan Fraser**, **Jennifer Silver**, **Lucy Sportza**, **Anna Stanley**,

Kate Parizeau, **John Smithers**, **Phil Loring**, **Ze'ev Gedalof** and **Aaron Berg**.

Staff: **Jennifer Beeler**, **Carol Hart**, **Adam Bonnycastle**, **Marie Puddister** and **Gihan Sooriyabandara**.

Student organizers: **Anthony Francioni**, **Kyle McCarrel** and **Emily De Souza**.

Political Science: **Troy Riddell** (Chair) and **Rachel Flucker** (Asst).

Professors: **Adam Sneyd**, **Leah Levac**, **Craig Johnson** and **Ajay Sharma**.

Gordon S. Lang School of Business and Economics (formerly College of Business and Economics):

Professors: **Elizabeth Kurucz**, **Daniela Senkl**, **Ruben Burga** and **Mark Juhasz**.

Student organizers: **Afra Mehwish** and **Zahra Bhojani**.

Community Engaged Scholarship Institute (CESI):

Elizabeth Jackson (A/Director), **Andrew Taylor** (Practitioner) and **Shirley Shanahan** (Admin).

Senior Administration: **Daniel Atlin** (VP External), **Malcolm Campbell** (VP Research), **Ben Bradshaw** (Asst. VP, Grad Studies), **Audrey Jamal** (CoS, President), **Cara Wehkamp** (Aboriginal Initiatives) and **Melissa McDonald** (Govt Relations).

Other Contacts: **Leith Deacon** (Environmental Design), **Robert Hanner** (Biodiversity Institute), **Alice Raine** (Arrell Institute), **Jeji Varghese** (Sociology), **Jonathan Newman** (Dean, Biological Sciences), and the **Sustainability Office Team:** **Brandon Raco** (Coordinator), **Samantha Casey** (Peer Helper) and **Natalie Vasilivetsky** (Composting).

» RECOMMENDATIONS

1. Orientation:

Belinda Leach (CSAHS Assoc Dean, Research) was a superb help to me and my assistant early on, as well as at key points when issues arose. She helped us navigate the role and informed us on services available on campus (eg.: CSAHS Communications).

Recommendation: consider engaging a former Kinross Chair to help orient the next Chair during their first few weeks. I reached out to George Greene the first Kinross Chair – his reflections were invaluable. I suggest sharing the reports of previous Kinross Chairs with future Chair-holders.

2. CSAHS:

knowing that Dean **Gwen Chapman** was in full support meant a lot and her staff were always helpful (eg.: **Kourtney Beckman**, **Meredith Warner** and **Maria D’Ullisse**).

Recommendation: suggest that future Chairs are introduced early on to staff in the Dean’s office to see how they can help with event promotion, alumni outreach and related activities. It was mostly by chance that I met the staff in the Dean’s office, who were indispensable to my role.

3. Geography, Environment and Geomatics:

this department is a wonderful home for the Kinross Chair. Camaraderie is in the air at Hutt! Synergies with faculty were rich and dynamic. Staffers **Carol Hart**, **Jennifer Beehler** and others patiently answered endless questions and rescued me more than once from my ongoing battles with the photocopier!

Recommendation: change nothing.

4. Field Trip:

as noted, the Ottawa field trip was a big success and a superb learning experience.

Recommendation: suggest offering this trip every winter term during reading week to undergraduate Environmental Governance and graduate Geography students as an excellent vehicle for enhanced learning.

Kirby Calvert and I largely subsidized the Winter 2019 trip – in the future, students could be asked to participate financially, or the department could potentially collaborate with Biological Sciences on their Ottawa field trip.

I would consider building in activities for course credit.

If asked, I would love to continue co-hosting this trip – I believe it would also be an excellent way to collaborate with future Kinross Chairs.

5. Student Mentoring:

Wanhong Yang, Anna Stanley, Noella Gray and **Kirby Calvert** helped me connect with groups of students early on, whether it was in classes or through networking lunches. One observation I have here is that students were keen to engage with me and my external contacts, but follow-up became more difficult as coursework pressures mounted.

Recommendation: consider launching an on-going GEOG mentorship program that could attract new students. Suggest starting with the undergraduate Environmental Governance and Masters in Conservation Leadership programs.

Related BSc programs have co-op but not Geography BAs, so this could be an interim step in the right direction.

Alumni and external experts could be recruited as mentors.

Consider offering course credits for certain types of activities.

Could be financed in part, by GEOG Alumni contributions.

6. Student Assistant:

my student assistant, was invaluable, as were other students who volunteered to help with events.

Recommendation: Interested candidates could be identified in advance and the Chair could then decide.

»» THANK YOU

A glance at your 25 history within the mining sector points to a thoroughly ingrained corporate value system that focuses on community involvement and employment, above-standard reclamation systems and legacy contributions for sustained prosperity in communities, post mining operations. Our examination and promotion of various forms of environmental governance can learn from your example.

As the Kinross Chair in Environmental Governance, I have had a busy and inspired season. While the world 'catches up' to the concept of responsible business practices as they relate to the protection of our resources, the University of Guelph has developed a comprehensive interdisciplinary program to bring leaders in sustainability to the challenges of environmental governance.

With your generous and insightful contributions, Guelph brings deeper learning, enhanced engagement, and a true appreciation for the need for strong partnerships to the issues. From my perspective at the University of Guelph, the future is bright.

I applaud your visionary business practices and your transformative generosity – and I speak for all the faculty and students at the University of Guelph when I convey my sincere appreciation for helping the ongoing efforts to bring prevalent and serious issues to our social consciousness, and for bringing valuable enrichment to University of Guelph students. On a personal note, I am also grateful for the inspired experience I have enjoyed as the Kinross Chair in Environmental Governance.

Thank You.



THANK YOU

